

www.americasbuildings.com



Custom built storage buildings, work-shops, portable garages, pool houses, horse barns, and playhouses in vinyl, metal, painted & urethane wood.



Help Line: 502-921-0002

Fax: 502-921-0178

Area Rep/Jenny White: 502-424-0584

New orders are normally constructed and delivered in approximately 4 to 6 weeks, and our delivery coordinator will reach out to the customer from 2 to 5 days in advance.

FEATURES

- 4x6 runners - all ground contact treated
- Floor joists - all 12" on center
- Wall studs 16" on center in all Vinyl, Painted & Urethane buildings (not metal)
- 25 yr. $\frac{5}{8}$ " Thickness floor, high strength on all floors except garages - Exact brand based on current availability
- 25 yr. Garage floors are $\frac{3}{4}$ " - Exact brand based on current availability
- Metal buildings all screwed (not nailed)
- All buildings vented
- Vapor barrier under all metal roofs
- Wide selection of top quality vinyl siding, metal, and shingles
- All metals and trim by GPB
- Rollup doors available 4' - 8' wide
- Single or double 36" fiberglass doors
- All door openings have Diamond Tread Thresholds
- Paints and urethanes by Haley Paint

Metal & Trim by



$\frac{7}{16}$ smartside with silverttech backing (on painted & urethane buildings)



Delivered Fully Built!

DELIVERY PROCESS

All pricing with the exception of metal and vinyl garages (built on site) are priced to be delivered fully constructed. We ask that the customer checks the path leading to desired location of the shed site to ensure of **at least 16" greater width than the shed**. The driver will then offload in the driveway or street and carry the shed in with the mule. If conditions are too tight we offer a build on site service.

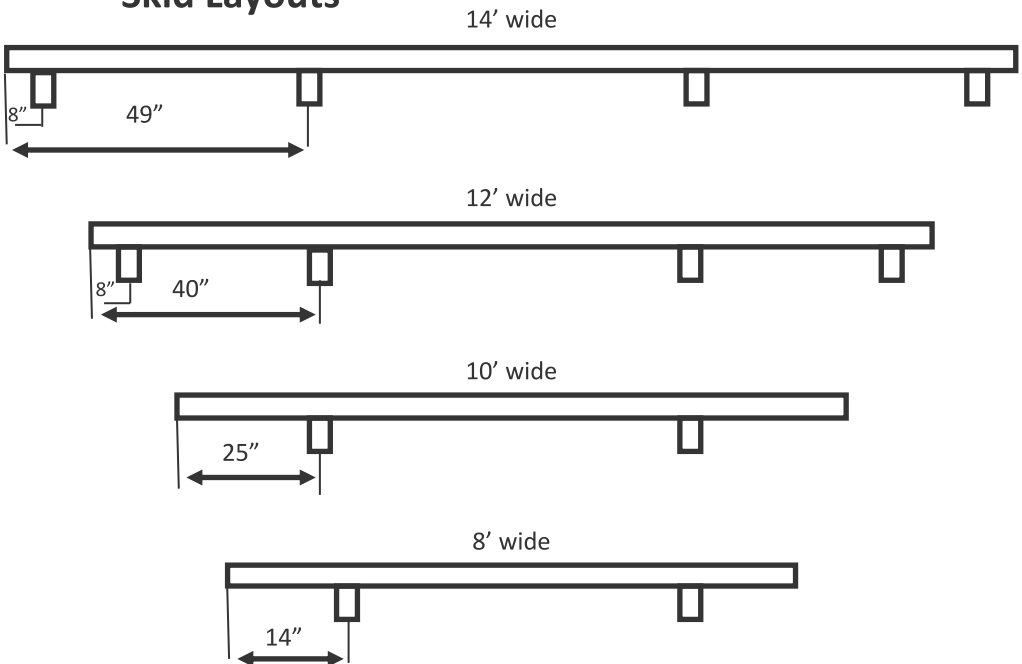


The Mule



The customer is to provide 2" and 4" thick solid concrete patio blocks for the driver to level the building. We encourage a level gravel base for buildings larger than 12'x24'. We discourage any leveling with patio blocks if the shed site is off level more than 20" end to end or side to side. **A charge of \$9.00 per inch will be accessed anything exceeding 20" off level.**

Skid Layouts



STANDARD METAL BUILDING

8' wide comes with a 5' roll-up door
10'-14' wide come with a 6' roll-up door
Roll-up door can be swapped for double doors

Available Sizes

8x10	10x10	12x12	14x24
8x12	10x12	12x16	14x32
	10x14	12x20	
	10x16	12x24	
	10x20	12x30	



METAL PORTABLE GARAGE

9'x7' garage door, (1) 3' entry door, (1) 30"x36" window, and a ¾" floor

Available Sizes

12x20	14x20
12x24	14x24
12x30	14x36



METAL GARAGE - BUILT ON SITE

(2) 9'x7' garage doors, (1) 3' entry door, (1) 30"x36" window, and a ¾" floor. Can install on concrete pad, verify exact dimeniosn needed - deduct 5%. A laser leveled graveled pad is suggested with wood floor models. Addiotnal charges applied if not level. *Also available in vinyl, call for quote!*

Available Sizes

24x24
24x30
24x36
24x40



METAL LOFTED GARDEN SHED

Choice of shingle or metal roof, double doors, (2) 4' lofts, and 2 windows.

**10x12 comes with 1 window*



Available Sizes

10x12 12x16 14x28
10x16 12x20
10x20 12x24
12x30



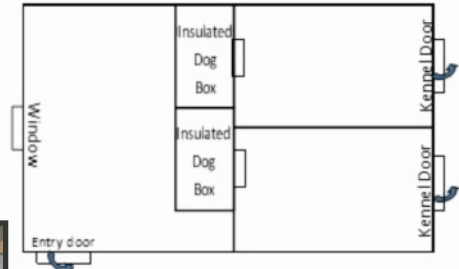
DOG KENNEL (METAL)

Entry door, 2 kennel doors, 2 insulated dog boxes, and 1 window



Available Sizes

10x12



Other sizes available, up to 4 runs

OPEN HORSE SHELTER (METAL)

2' Front overhang and 4' kick board



Available Sizes

10x16 12x16
12x20
12x24



Custom options available, call for a quote!

GARDEN SHED (WOOD OR VINYL)

Choice of wood or vinyl siding, choice of shingle or metal roof, double doors, and 2 windows.

**8x12, 10x12, and 12x14 come with 1 window*



Vinyl

Shutters shown optional



Wood

Available Sizes

8x12	10x12	12x14	14x20
	10x16	12x16	14x28
	10x20	12x24	14x36
		12x30	



WOOD INTERIOR



Silvertech backing (radiant barrier) on all painted buildings!

UTILITY (WOOD OR VINYL)

Choice of wood or vinyl siding, choice of shingle or metal roof, and double doors or 6' roll-up door.

**8' Wide comes with 5' roll-up door*



Wood

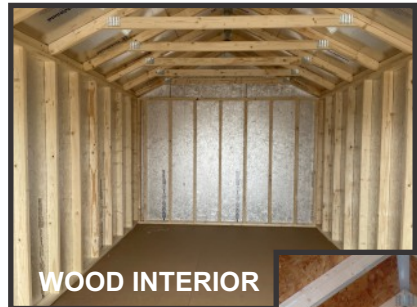


Vinyl

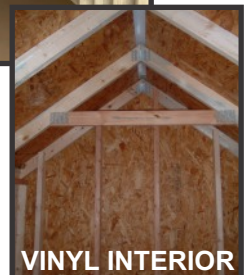
Side windows/Shutters shown optional.

Available Sizes

8x8	10x10	12x14	14x24
8x12	10x12	12x20	14x36
	10x16	12x30	



WOOD INTERIOR



VINYL INTERIOR

END LOFT (WOOD OR VINYL)

Choice of wood or vinyl siding, choice of shingle or metal roof, 8' loft, and double doors or 6' roll-up door. *8' Wide comes with 5' roll-up door

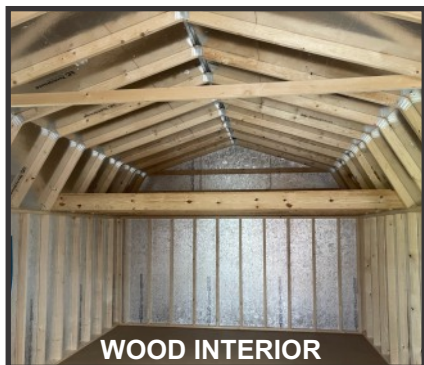
Available Sizes

8x12	10x12	12x14	14x20
	10x16	12x16	14x28
	10x20	12x24	14x36
		12x30	



Vinyl

Ramp, side door, windows & shutters shown optional



WOOD INTERIOR



Wood

END LOFT (WOOD OR VINYL)

Choice of wood or vinyl siding, choice of shingle or metal roof, (2) 4' lofts, 2 windows, and double doors. *8x12 and 10x12 comes with 1 window

Available Sizes

8x12	10x12	12x16	14x24
	10x16	12x20	14x32
		12x24	
		12x36	



Shutters optional.

Vinyl



WOOD INTERIOR



Wood

A-FRAME CABIN (WOOD, METAL OR VINYL)

Choice of wood, metal or vinyl siding, choice of shingle or metal roof, 9-Lite door, (4) 24"x27" non-insulated windows, octagon window, loft over porch, 4" covered overhang, post/railing, and choice of porch depth: 4', 6' or 8' *included in building dimensions*
 *Upgrade to insulated windows \$113 per window
 ** Credit \$475 for no porch railing

Available Sizes

10x16 12x16 14x24
 12x24 14x32



Available in Gambrel style, call for quote!

VINYL POOL HOUSE

Choice of wood, metal or vinyl siding, choice of shingle or metal roof, 9-Lite door, (4) 30"x36" windows, shutters, and cupola.
 *12' wide has 3'6" porch and 14' wide has 4' porch, *included in building dimensions*

Available Sizes

12x16 14x20
 12x24 14x24



NEW!
Chicken Coop
 8x10 KCP01
 \$4492



Sides	Trims	Roof
Clay	Ebony	Burnished Slate
Mountain Red	White	Black
Zook Gray	Dark Gray	Charcoal



8x10 Chicken Coop includes 1 entry door, 2 - 36"x36" windows, 6 - nesting boxes & 1 chicken door Available in 3 color combos.

Options

Windows:

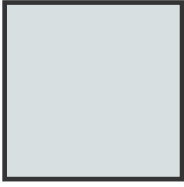
Standard Non-

24x27 KN65 \$128

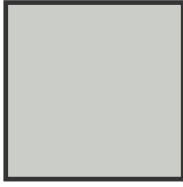
30x36 KN66 \$156

Octagon Window	KN55	\$97
Cupola	KN56	\$263
3' entry door	KN67	\$313
Double 3' entry doors	KN69	\$605
3' 9-Lite prehung door	KN68	\$533
Pictured in Poolhouse, page 8		
9'x7' garage door	KN57	\$994
5' rollup door	KN58	\$639
6' rollup door	KN73	\$675
7' rollup door	KN74	\$710
8' rollup door	KN75	\$753
Shutters	KN70	\$64 per set
Shelving and lofts	KN72	\$5.91 per sq. ft.
Treated floor joists	KN71	\$0.70 per sq. ft.
4'x5' shed ramp	KN62	\$227
5'x5' shed ramp	KN61	\$284
6'x5' shed ramp	KN63	\$313
8'x5' shed ramp	KN59	\$369
8'x5' heavy duty garage ramp	KN100	\$597
Build on site	KN64	15%
<i>\$500 minimum / \$1000 maximum</i>		
Wainscoting (2 colors)	KN60	\$1.56 per sq. ft.

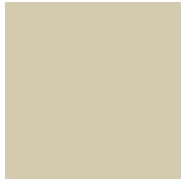
Metal Colors *Choice of Body, Roof and Trim Color*



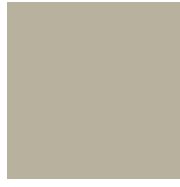
Bright White



White



Ivory



Stone



Tan



Gold



Copper



Clay



Gray



Charcoal



Burnished
Slate



Blue



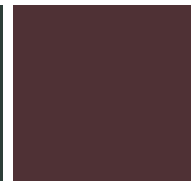
Gallery Blue



Evergreen



Hartford
Green



Burgundy



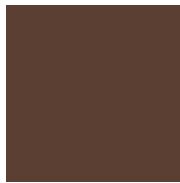
Dark Red



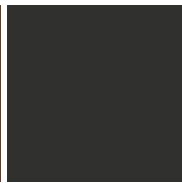
Crimson Red



Red



Brown

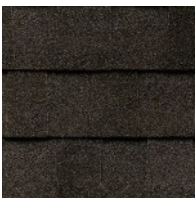


Black



Shiny Black

Owens Corning Shingle Colors



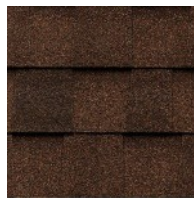
Black



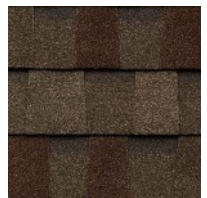
Estate Gray



Chateau Green



Brown Wood



Weathered

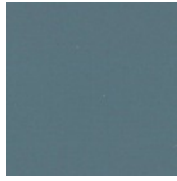
Paint Colors *Choice of Body and Trim Color*



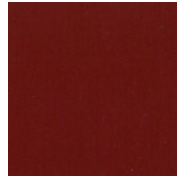
Zook Gray



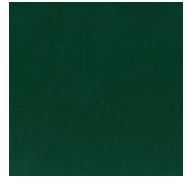
Dark Gray



Riehl Blue



Mountain
Red



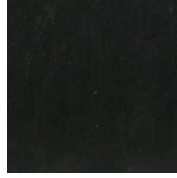
Metalmax
Green



Lancaster
Beige



Clay



Black



White



Vinyl Siding Colors *Choice of Body Color*



Colonial
White



Heritage
Cream



Autumn
Yellow



Sandstone
Beige



Desert
Tan



Light
Maple



Savannah
Wicker



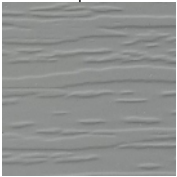
Buckskin



Natural
Clay



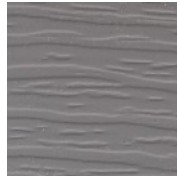
Cypress



Seagrass



Granite
Gray



Charcoal
Gray

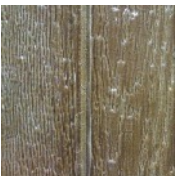


Sterling
Gray

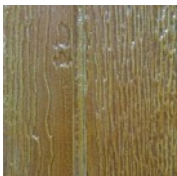


Oxford
Blue

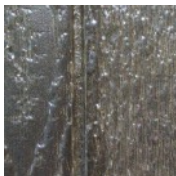
Urethane Colors *Choice of Body Color*



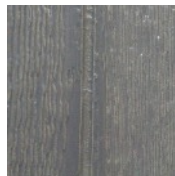
Chestnut



Butternut



Ebony



Driftwood

