

Prices Include:

Pennsylvania
 West Virginia
 Ohio
 Code:HPB

- Delivered and set up on customers property
- LP SmartSide Siding
- Shingles are standard / Metal is an upgrade
- 2 Year structural integrity warranty
- Great craftsmanship & incredible service
- Standard painted siding or optional Vinyl siding

Rev 5/21

A. PICK "YOUR" BUILDING SIZE AND STYLE

Portable STORAGE BUILDINGS



BARN 4FT. SIDE WALL



Size	Model	Retail	Size	Model	Retail
6ft.x6ft.	HPB01	\$2470	10ft.x14ft.	HPB09	\$4473
6ft.x8ft.	HPB02	\$2616	10ft.x16ft.	HPB10	\$5116
8ft.x8ft.	HPB03	\$2869	10ft.x20ft.	HPB11	\$5691
8ft.x10ft.	HPB04	\$3238	12ft.x12ft.	HPB12	\$4678
8ft.x12ft.	HPB05	\$3559	12ft.x16ft.	HPB13	\$5573
8ft.x16ft.	HPB06	\$4105	12ft.x20ft.	HPB14	\$6492
10ft.x10ft.	HPB07	\$3900	12ft.x24ft.	HPB15	\$7719
10ft.x12ft.	HPB08	\$4192			

GABLE UTILITY



Size	Model	Retail	Size	Model	Retail
6ft.x8ft.	HPB16	\$2820	12ft.x16ft.	HPB28	\$6419
6ft.x10ft.	HPB17	\$3170	12ft.x20ft.	HPB29	\$7369
8ft.x8ft.	HPB18	\$3327	12ft.x24ft.	HPB30	\$8594
8ft.x10ft.	HPB19	\$3645	12ft.x28ft.	HPB31	\$9995
8ft.x12ft.	HPB20	\$4055	12ft.x30ft.	HPB32	\$10497
8ft.x16ft.	HPB21	\$4677	12ft.x32ft.	HPB33	\$10863
10ft.x10ft.	HPB22	\$4416	12ft.x36ft.	HPB34	\$11966
10ft.x12ft.	HPB23	\$4745	12ft.x40ft.	HPB83	\$13,070
10ft.x14ft.	HPB24	\$5145	14ft.x20ft.	HPB35	\$9158
10ft.x16ft.	HPB25	\$5484	14ft.x24ft.	HPB36	\$10,336
10ft.x20ft.	HPB26	\$6717	14ft.x32ft.	HPB37	\$13,147
12ft.x12ft.	HPB27	\$4998	14ft.x40ft.	HPB38	\$16,086

ESTATE END BARN



All 6' & 8' wide buildings come with a single door. All 10' wide and larger buildings come with double doors.

Size	Model	Retail	Size	Model	Retail
6ft.x8ft.	HPB39	\$3238	12ft.x16ft.	HPB50	\$6652
6ft.x10ft.	HPB40	\$3598	12ft.x20ft.	HPB51	\$7583
8ft.x8ft.	HPB41	\$3880	12ft.x24ft.	HPB52	\$8691
8ft.x10ft.	HPB42	\$4211	12ft.x28ft.	HPB53	\$9869
8ft.x12ft.	HPB84	\$4473	12ft.x30ft.	HPB54	\$9873
8ft.x16ft.	HPB43	\$5309	12ft.x32ft.	HPB55	\$10,755
10ft.x10ft.	HPB44	\$4805	12ft.x36ft.	HPB56	\$11,733
10ft.x12ft.	HPB45	\$5088	12ft.x40ft.	HPB83	\$12,303
10ft.x14ft.	HPB46	\$5505	14ft.x20ft.	HPB57	\$9372
10ft.x16ft.	HPB47	\$5972	14ft.x24ft.	HPB58	\$10,725
10ft.x20ft.	HPB48	\$6959	14ft.x32ft.	HPB59	\$13,828
12ft.x12ft.	HPB49	\$5388	14ft.x40ft.	HPB60	\$16,330

ESTATE SIDE BARN



All 6' & 8' wide buildings come with a single door. All 10' wide and larger buildings come with double doors.

Size	Model	Retail	Size	Model	Retail
6ft.x8ft.	HPB61	\$3238	12ft.x16ft.	HPB72	\$6652
6ft.x10ft.	HPB62	\$3598	12ft.x20ft.	HPB73	\$7583
8ft.x8ft.	HPB63	\$3880	12ft.x24ft.	HPB74	\$8691
8ft.x10ft.	HPB64	\$4211	12ft.x28ft.	HPB75	\$9869
8ft.x12ft.	HPB85	\$4473	12ft.x30ft.	HPB76	\$9873
8ft.x16ft.	HPB65	\$5309	12ft.x32ft.	HPB77	\$10,755
10ft.x10ft.	HPB66	\$4805	12ft.x36ft.	HPB78	\$11,733
10ft.x12ft.	HPB67	\$5088	12ft.x40ft.	HPB84	\$12,303
10ft.x14ft.	HPB68	\$5505	14ft.x20ft.	HPB79	\$9372
10ft.x16ft.	HPB69	\$5972	14ft.x24ft.	HPB80	\$10,725
10ft.x20ft.	HPB70	\$6959	14ft.x32ft.	HPB81	\$13,828
12ft.x12ft.	HPB71	\$5388	14ft.x40ft.	HPB82	\$16,330

SEE BACK SIDE FOR ALL COLOR CHOICES AND BUILDING OPTIONS

B. PICK YOUR COLORS *Colors may vary due to print

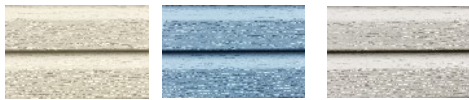
METAL ROOF COLORS

Upcharge for metal roof



VINYL SIDING COLORS

Upcharge for vinyl, please call for a price



Almond Blue Clay



Gray Linen Sage



Sandstone Wheat White

40 YEAR METAL WARRANTY



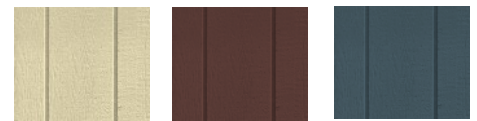
50 YEAR WARRANTY ON LP SMARTSIDE

2 YEAR CRAFTSMANSHIP WARRANTY

PAINT COLORS



Almond Avocado Black



Beige Charcoal Brown Blue



Chestnut Clay Dark Gray

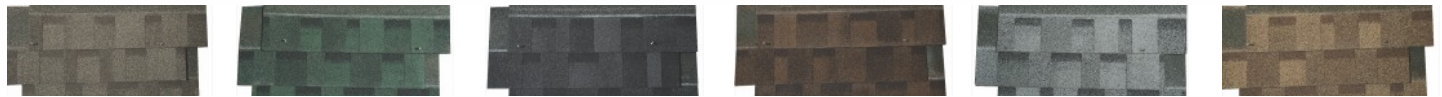


White Dark Green Gray



Red Navajo White

SHINGLE COLORS



Weathered Wood Green Black Bark Gray Cedar

C. STANDARD FEATURES

- Amish craftsmanship
- Up to 30 miles free delivery ***See Below**
- Tech Shield metallic insulation barrier in roof
- Pressure treated 4x4 skids
- Floor decking 5/8" plywood material
- Floor joists 12" or 16" on center
- 7/12 Roof pitch
- Stud walls 16" on center
- Architectural shingles with 30 year warranty
- Window trim is optional on all building windows
- All 6' and 8' sheds come with a single door
- All 10' and wider sheds come with double doors

D. OPTIONS

- HPO01 18"x27" Window - **\$117**
- HPO02 24"x36" Window - **\$172**
- HPO03 Shutters or window trim - **\$78**
- HPO04 Additional 3' door - **\$172**
- HPO05 Additional double door - **\$313**
- HPO06 Pre-hung steel door - **\$547**
- HPO07 4x4 Ramp - **\$150**
- HPO08 5x5 Ramp - **\$234**
- HPO09 7'8" Side walls / Gable and Estate - **\$4.69 sq. ft.**
- HPO10 Metal roof - **\$5.48 sq. ft.**
- HPO11 Pressure treated floor and joists - **\$2.04 sq. ft.**
- HPO12 Joists 12" on center - **\$0.63 sq. ft.**
- HPO13 Double floors - **\$1.88 sq. ft.**
- HPO14 Shelves / Loft - **\$7.81 sq. ft.**
- HPO15 Built on site fee - **35% of retail**
(Use built on site item # 709)
- HPO16 Mileage fee - **\$3 per mile** (Use item # 709)



Front Porch Package

- 4' Covered porch
 - 9-lite door
 - (3) 18"x27" windows
- Pp01 \$1109**



Quaker Overhang Package

- Gable sheds only
 - (No 14' wides)
- Pp03 \$439**



Garage Package

- 8'x6' garage door
 - 36" wood door
 - Joist 12" on center
- Pp02 \$1109**



E. DELIVERY



Building will arrive fully constructed at the customers site on a truck and trailer similar to the one pictured. We will need prior clearance to install the building. Customer needs to purchase 12"x12"x1 1/2" pavers from Lowe's to go under building. Pea gravel should be bought to put under the pavers, 3-5 bags depending on building size. Normal lead time 3-4 weeks for delivery, weather permitting, except in unusual circumstances.

Prices are subject to change without notice. Not responsible for typographical errors.

For additional info go to www.americasbuildings.com - A site exclusively for Lowe's.